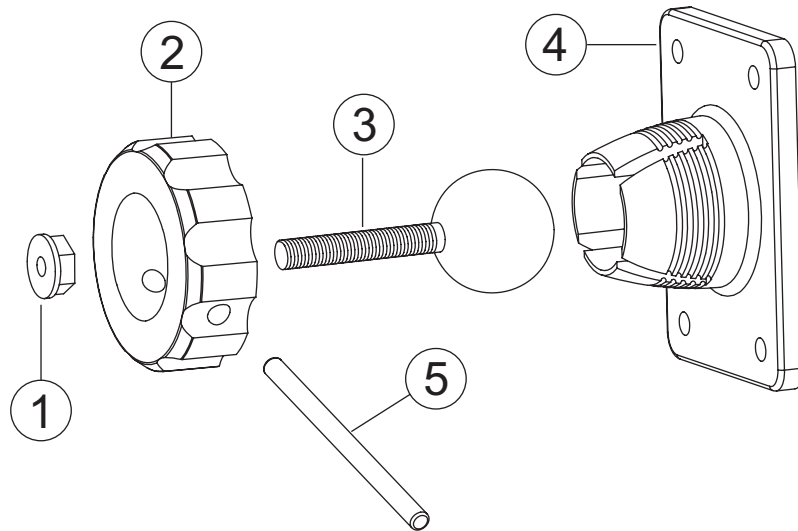
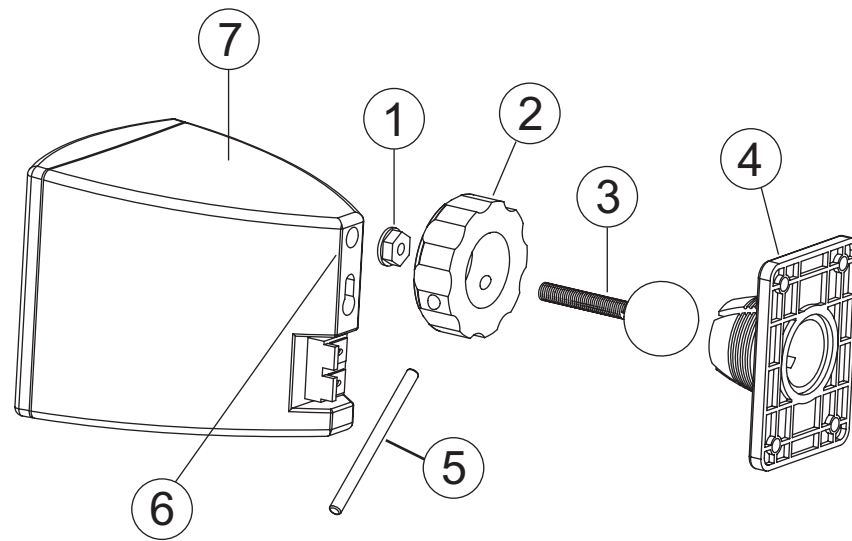


Bracket assembly and mounting:

IMPORTANT SAFETY NOTE: PROPER SELECTION OF MOUNTING HARDWARE NOT INCLUDED HEREIN AND PROPER ASSEMBLY AND INSTALLATION OF BRACKETS, INCLUDING BUT NOT LIMITED TO SELECTION OF APPROPRIATE WEIGHT BEARING SUPPORT AND BRACKET USE WITH THE SPECIFIED SPEAKER ONLY IS THE EXCLUSIVE RESPONSIBILITY OF THE CUSTOMER. MANUFACTURER DISCLAIMS ANY LIABILITY FOR THE SELECTION OF MOUNTING HARDWARE AND OR BRACKET INSTALLATION.



- Loosen and remove the molded nut (2) by turning it counter clockwise. Use the supplied metal bar (5) if necessary by inserting it in one of the holes on the molded nut (2).
- Pull the ball/shaft (3) out of the wall bracket (4).
- Slide on the molded nut (2) onto the ball/shaft (3) with threaded opening facing the ball, and thread on the metal nut (1) all the way onto the ball/shaft (3), with the nut (1)'s "knurled" surface facing away from the ball.
- Screw on the ball/shaft (3) into the threaded insert on the back of the speaker cabinet (6) until it is fully seated against the bottom of the insert.



- Tighten the "knurled" nut (1) using a crescent wrench until it is firmly seated against the back of the speaker and has fully locked the ball/shaft (3) and the speaker cabinet together. Please note that once this nut is tightened, it may embed some marks on the back of the speaker where the attachment is made. However these marks will be covered by the nut (1).
- Mount the wall bracket (4) onto a wood stud on the wall, using #10, minimum 1 inch long, wood screws. Make sure that all 4 screws are driven into the stud and not in drywall if the bracket needs to be mounted on drywall, the use of properly selected and installed wall-anchors and screws is essential.
- Holding the speaker cabinet (7) with both hands, reinsert the ball portion of the ball/shaft (3) into the wall bracket (4).
- Hand tighten the molded nut (2) while positioning the speaker for the intended orientation. Please do NOT tighten the molded nut (2) too hard to avoid damaging the bracket.
- Once the orientation of the speaker is finalized, use the metal bar (5) in one of the holes on the molded nut (2) and tighten securely. Please do NOT press hard and strike the speaker when it is finalized.